

60

OPEN

solaris *POWER*

DAL 1974 PER CHI NAVIGA

TECHNICAL
SPECIFICATIONS

60 OPEN

TECHNICAL SPECIFICATIONS

LENGTH OVERALL	18,29 m / 60'
WATER LINE LENGTH	16,23 m / 53'24"
BEAM	5,35 m / 17'55"
DRAFT	0,85 m / 2'7"
APPROX. LIGHT DISPLACEMENT	23.000 kg / 50,706 lbs
APPROX. LOAD DISPLACEMENT	26.500 kg / 58,422 lbs
FUEL CAPACITY	3.000 L / 792 US gal
WATER CAPACITY	600 L / 159 US gal
ENGINES	2 x Volvo Penta D6 IPS 800 441 kW / 600 hp 3000 rpm Optional 2 x Volvo Penta D6 IPS 950 533 kW / 725 hp 2500 rpm 2 x Volvo Penta D13 IPS 1350 735 kW / 1000 hp 2400 rpm
MAX SPEED	30 kn - IPS 800 34 kn - IPS 950 39 kn - IPS 1350
CRUISING SPEED	25 kn - IPS 800 28 kn - IPS 950 30 kn - IPS 1350
CABINS	2 / 3
BATHROOMS	2
MAX PERSONS CAPACITY	12
DESIGN	Brunello Acampora / Victory Design Solaris Power Design Team

60

COMING IN 2023

THE NEW WALKAROUND OPEN BOAT THAT
WILL REDEFINE THE STANDARDS OF THE
CATEGORY.

O
P
E
N

THE GREAT SEAGOING CAPABILITIES OF SOLARIS POWER

SMOOTH SAILING THROUGH THE WAVES AND A DRY DECK IN CHOPPY SEAS

The sharp shape of the bow and the pronounced flare, softens the passage through the waves and keeps the deck dry.

GREAT STABILITY WHILE CRUISING AND AT ANCHOR

The hull shape guarantees great stability and comfort when cruising and at anchor, without the need for stabilizers.

LOW FUEL CONSUMPTION RESULTING IN EXCELLENT RANGE

The advanced studies on the shapes of the hull, ensure low fuel consumption, resulting in excellent range and reduced CO₂ emissions. One example, the 48 Open at a cruising speed of 26 knots only needs 4.8 litres per mile.

EFFICIENT CRUISING BOTH IN DISPLACEMENT AND IN PLANING MODE

Unlike ordinary boats with planing hulls, Solaris Power are capable to cruise steadily and without roll even in displacement mode from 10 to 14 knots.



THE LATEST PROPULSION TECHNOLOGY

Solaris Power yachts feature cutting-edge propulsion working in synergy with the shape of the hull. This is the outcome of intense collaboration between Victory Design and Volvo Penta. Since 2005 Brunello Acampora has been studying shapes that are optimised for the

IPS, including 'azimuth pods' for planing hulls; having found they generate huge performance improvements. Moreover, the compactness of the propulsion apparatus yields a noticeable increase of living space: the interiors of these boats compare favourably with much bigger

yachts, and make the tender easy to stow, launch and haul.

EASY DOCKING THANKS TO THE JOYSTICK

Docking manoeuvres are simplified thanks to the joystick and the azimuth pods, even with a single person at the controls.

LOW NOISE LEVEL AND ZERO VIBRATIONS

The absence of the rotating masses of the shaft line and the engine exhausts in the propeller pods ensure absence of vibrations and low noise.

SPACIOUS AND WELL VENTILATED ENGINE ROOM

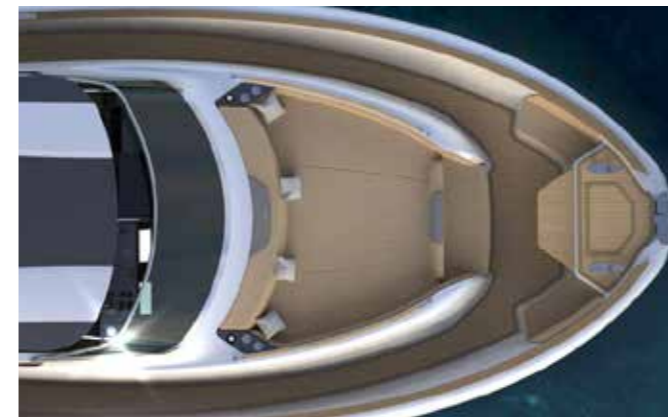
Offering easy access to the engine itself and to the other systems.

INNOVATIONS FOR MORE ON-BOARD COMFORT



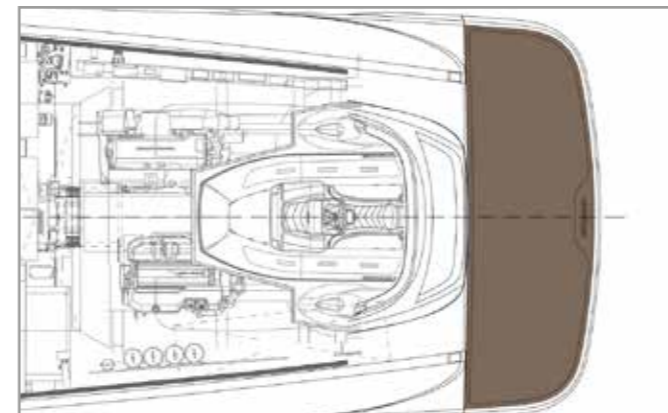
WALKAROUND

The decks of all models include lateral walkways that afford easy and safe movement from bow to stern.



TENDER GARAGE

Under the aft opening sundeck there is a large garage that can be used for the tender and various water toys.



FOLD-OUT BULWARKS

These can be opened for enhanced enjoyment of the cockpit, increasing its surface by 20%.



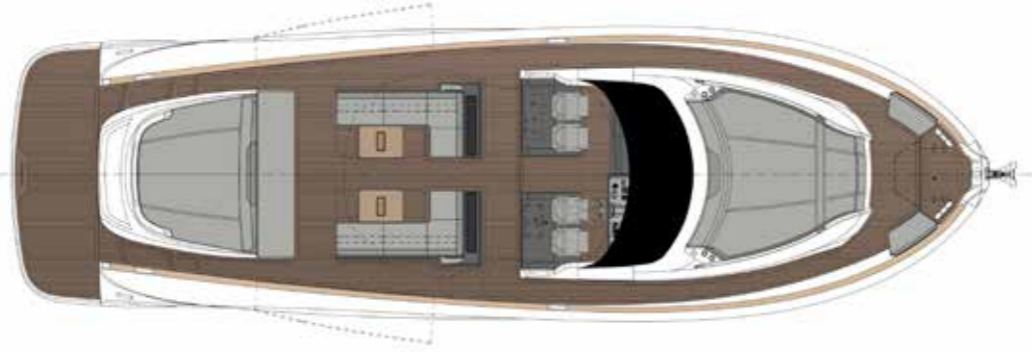
LAYOUT IN MULTIPLE VERSIONS

The internal and external layouts are available in several versions to suit the tastes and needs of owners.



LAYOUTS

MAIN DECK



LOWER DECK

Version A (standard)



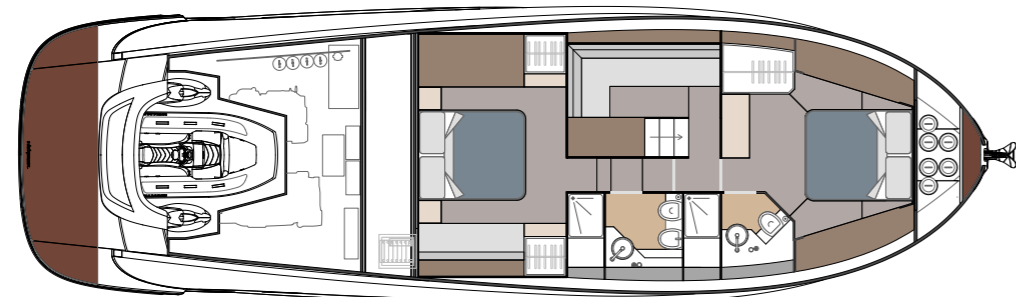
LOWER DECK

Version B (optional)



LOWER DECK

Version C (optional)







MAKE YOUR SOLARIS POWER UNIQUE



HULL AND DECK



WHITE



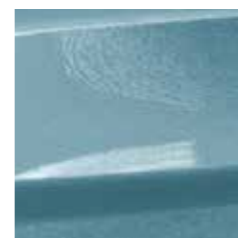
EXTREME SILVER



SOLARIS BLUE



JAZZY BLUE



SILVER LAKE



CHAMPAGNE

WOODS



OAK (STD)



WALNUT (OPT)

OUTDOOR UPHOLSTERY



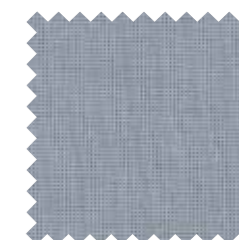
ICE CREAM



CREAM

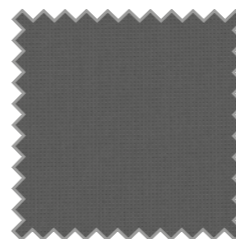


CAMEL



ALUMINIUM

BIMINI



BLACK



IVORY

RESPECT FOR THE ENVIRONMENT



INFUSION LAY-UP SYSTEM



FSC CERTIFIED WOOD SUPPLY

STANDARD SPECIFICATIONS

HULL AND DECK

- Stainless steel deck equipment
- Electric winch windlass with telescopic hawse and remote control
- Galvanized delta anchor and 75mt 10mm chain
- Synthetic teak bridge and stern platform
- Platform bathing ladder extractable made by stainless steel and teak
- Synthetic teak gunwale
- Bow and stern sun bathing mattresses
- Glass and stainless steel windscreen
- Sliding crystal door for cabins access
- Acoustic alarm for water in stern and bow bilges
- Midboat bollards (1 each side)
- Fenders plugs
- Stern steps courtesy lights
- Fire extinguisher
- Zinc anodes

HELM CONSOLE

- Control station with complete instrumentation
- Pilot chairs
- Throttle lever - electric inverter with Joystick
- Display 16"
- Volvo Penta auto pilot
- Rudder indicator
- Echo sounder
- Fuel and water indicator
- VHF Garmin
- Compass

COCKPIT

- Dinette with large sofas and table
- Stern sundeck with relax area
- Seabob and tender garage with hydraulic door
- Lifejacket peak with line
- Cockpit fresh water sink

OWNER'S CABIN

- Bathroom access
- Sides wardrobe with glove compartments
- Sides windows
- Reading lights
- Double bed with mattress
- Big stowage
- Bedside Table
- Led lights
- Vinyl covered ceiling
- Mirror
- Curtains

OWNER'S BATHROOM

- Bathroom accessories
- Wardrobe and shelves
- Detached shower with crystal door
- Washbasin
- Led lights
- Openable portlight
- Mirror
- Pleated curtain
- Ceramic electric WC and control panel 3/4 full

GUEST'S CABIN

- Sides wardrobe with glove compartments
- Sides windows
- Reading lights
- Single bed with mattress (nr.2)
- Big stowage
- Bedside Table
- Led lights
- Vinyl covered ceiling
- Mirror
- Curtains

GUEST'S BATHROOM

- Bathroom accessories
- Wardrobe and shelves
- Detached shower with crystal door
- Washbasin
- Led lights
- Openable portlight
- Mirror
- Pleated curtain
- Ceramic electric WC and control panel 3/4 full

PROPULSION SYSTEM AND ENGINE ROOM

- VOLVO PENTA IPS 800 (441 Kw / 600 Hp) engines with manual interceptor system
- Electronic blowers (nr. 2)
- Volvo toolbox
- Hatch and stainless steel ladder
- Boiler
- Automatic/manual fire extinguisher
- Fuel filters water separator
- Generator peak
- Inspection lights
- Bow watertight bulkhead
- Gasoline tank

BOW LOCKER

- Chain peak
- Winch remote control
- Inspection hatch
- Fresh water shower for chain washing
- Stainless steel bar for fendresses

UNMOUNTED CREW CABIN

- Stern cabin portlight
- Access ladder
- Planking
- Storage shelves

SYSTEMS

- Joystick docking assistance
- Remote control for engines power shut-off
- Fire extinguisher (one in each cabin)
- Generator battery
- Engines battery
- Auxiliary services battery
- Battery charge
- Illumination in cabins
- Battery cut off switch
- Parallel mechanical and electrical battery switch
- Black water output system with automatic electropump
- Bilges output system with 3 electropumps
- Fresh water pump
- VHF transceiver system
- Lounge and lower deck entrance air conditioning system
- Electric WC system with fresh water
- Cathodic protection with zinc anodes
- Grey water output system with electropump

GENERAL EQUIPMENTS

- Quay cable
- Fendresses n. 6

HARD TOP

- Mast with navigation lights and flag
- Acoustic alarm
- Navigation lights

OUTDOOR KITCHEN

- Induction cooktop
- Worktop
- Fridge
- Sink
- Dustbin
- Stainless steel basin
- Led lights
- Drawer and closets

DISCLAIMER AND COPYRIGHTS

Solaris Power Yachts reserves the right to change descriptions, modify, or substitute products in this catalogue without notice. Solaris is a registered trademark of Solaris

Yachts Srl, other names may be registered trademarks of their respective owners. Solaris Power © 2023. All rights reserved.

